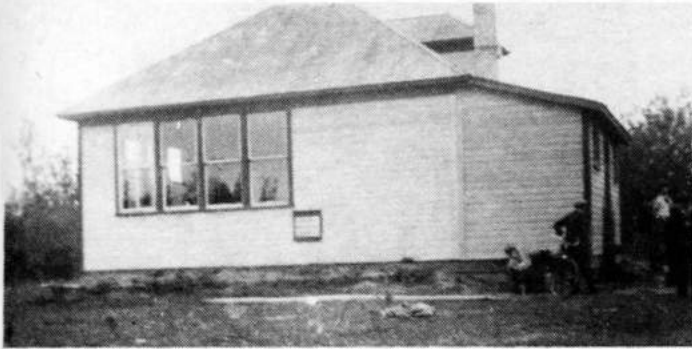


## Lone Spruce School Division #1362

*by Caroline McDonald*

Lone Spruce school was built between the years 1913 and 1915. It was named after the Post Office in the district and was located on the west side of 1-34-8 W2, one half mile from each north and south corners of the section. The grounds consisted of two acres of land.



*Lone Spruce School*

The school opened about 1915. The first trustees were L. Brough, E. Cunningham, R. Pierson Sr. and H. Wyborn, Secretary.

The pupils and their parents were mostly from the east and west sides of the district and made Invermay and Rama their shopping places.

There were very few pupils the first year and some were, James and John Brough, Mary, Einar and Ole Jensen, Jessie and Nellie Cunningham, Jennie, May, Mabel and Billy Mann, Mary and Annie Balavayder, Paul Knash and David Wyborn.

The second year there were quite a lot more and continued to be until Croydon school opened in 1949, or thereabouts.

The first teacher was Mr. Oliver and as that was when the first World War was on, he enlisted and was killed overseas. Mr. Neilson and Mrs. Bucknall followed and many more through the years.

A new school was built about 1950-51 on 8-34-7 W2, two miles east of the old site. The old school was sold and moved. The new school opened about 1952 and then attendance of pupils fell off as schools were being centralized. The new school was moved to Hazel Dell about 1959 or 60.

copyright Parkland Trails. Histories of R.M. of Invermay and Villages of Invermay and Rama ISBN 0-919781-11-X Invermay, Rama History book Committee, Invermay, SK SOA 1M0. With Permissions for the SK One Room Schoolhouse Project <https://saskgenweb.ca/cansk/school/>